

MID, OIML or (C)EN

EC-Type Examination Certificates for gas meters and volume conversion devices are valid in the entire EU since the introduction of the Measuring Instruments Directive (MID). Next to testing against MID (Annex MI-002), NMi also tests your product using internationally accepted OIML recommendations and (C)EN standards. Find out what is the best solution for the market access of your gas meter.

WHAT IS BEST FOR YOU

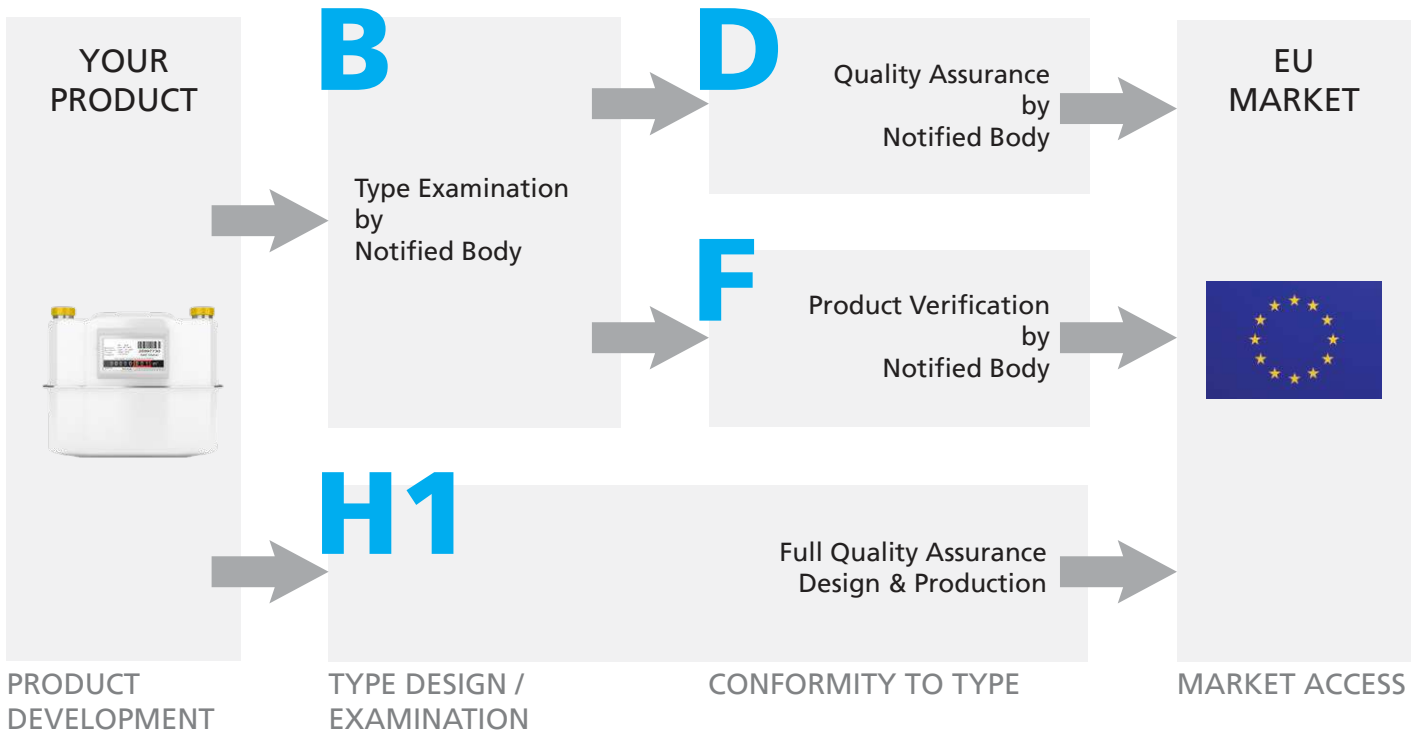
If you wish to sell your meters in the EU only, NMi can perform tests according to the latest applicable standards and recommendations for gas meters, as well as for the provisional conformity with MID. With regard to market access outside Europe and other additional customer requirements, we can test your measuring instruments for compliance with global recommendations for all types of gas meters (diaphragm, turbine, rotary, ultrasonic, etc.). By combining these tests directly with the MID test plan, the type examination process can be executed efficiently and your product can be launched on the global market quickly. At your request, we will help you set up a test program that is tailored to your needs. The overview shows you which standards are applicable.

For testing of your Electronic Volume Conversion Devices (EVCDs) we use the internationally accepted EN 12405-1 for the presumption of conformity with MID.



		Global recommendations	European standards
Gas meters	Diaphragm gas meters	OIML R 137	EN 1359
	Turbine gas meters	OIML R 137	EN 12261
	Rotary gas meters	OIML R 137	EN 12480
	Ultrasonic gas meters	OIML R 137 / ISO 17089-1	EN 14236 (residential)
	Software	included in R 137	Welmec guide 7.2
Peripheral equipment	Electronic volume conversion device (EVCD)	-	EN 12405-1
	Pressure and temperature transducers	-	EN 12405-1
	Gas chromatographs / CVDDs	OIML R 140 / ISO 10723	-
	Gas meters - Additional Functionalities	-	EN 16314

POSSIBLE ROUTES TO CONFORMITY WITH MID



CLARITY IN ADVANCE!

NMi always informs you about the project steps in advance. We are happy to work, with prior agreement, on investments, test programs and time schedules. Before starting tests, we can issue a draft Type Approval Certificate that is based on your documentation. This means that you already know what the certificate will look like if your measuring instrument complies with the requirements.

STEEC

NMi uses Standard Type Examination & Evaluation Certificates (STEEC) as a method to provide structure in your approval documents. This method gives you a clear view on the consequences of a product modification. STEEC defines three levels:

Essential Parts:

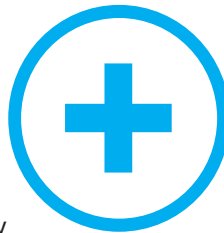
If an essential part has to be modified, revision of your certificate is needed as these modifications have an impact on the metrological aspects of your product.

Conditional Parts:

The conditions under which this part can be used or attached are mentioned in your certificate. Changes to these conditions could lead to small revisions of your certificate.

Non-Essential Parts:

Modifications in non-essential parts have no consequences for your certificates. You are free to modify these parts. The modification has no effect on the metrology aspects of the product.



NMi THINKS AHEAD

In order to achieve a minimum time to market, it is vital that your design already complies with the legal requirements in the target countries. NMi provides support in different phases of product development, helping you avoid expensive and time-consuming modifications later on. You can take into account the requirements relating to your meter during the very earliest stages of product development. This enables you to reduce development costs as well as the time between design and final product according to the requirements. The result is fewer failures and therefore less retesting during certification.

WHAT NMi OFFERS YOU

In the specific field of gas meters and electronic conversion devices, NMi offers you the following services:

- MID Type Examination
- OIML and EN Test Reports
- Type Approval Management
- STEEC
- System Certification
- Training
- Consultancy

