



UTILITY - GAS



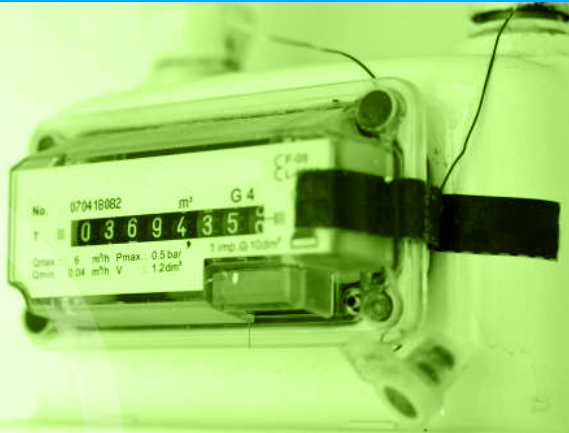
++++++
TRUE VALUE
++++++
TESTING & CERTIFICATION

+31 88 636 2332 | nmi@nmi.nl | www.nmi.nl

We will guide you!

BEST ROUTE TO MARKET

- Testing
- Certification
- Calibration
- Training



INTEROPERABILITY AND INTERCHANGEABILITY

- Official Test House for SMDA testing for UK
- Zigbee communication

TRAINING , GUIDANCE AND ADVICE

- Legal requirements for gas meters
- MID training for Module B and module D
- Pre audits for module D
- Software WELMEC 7.2 training
- Updates in gas meter standards
- Pre EMC testing
- Training European Market Access for LNG, Biogas and CNG applications

INTERNATIONAL PARTICIPATION

- Member of OIML TC 8 / Sc 7
- Member of WELMEC 7 and 11, chairman subgroup gas meters
- Member of national NEN group flow measurement 310 066



GAS METER TESTING & CERTIFICATION

- Worldwide OIML Recommendation R 137
- European EN standards
- Diaphragm gas meters (EN 1359)
- Rotary gas meters (EN 12480)
- Turbine gas meters (EN 12261)
- Domestic ultrasonic gas meters (EN 14236)
- Industrial ultrasonic gas meters (ISO 17089)
- Additional functionalities (EN 16314)
- Data protection and security, penetration testing
- MID approvals
- Modular approach (WELMEC 11.6)
- Software examination (WELMEC 7.2)
- LNG measuring systems

GAS CHROMATOGRAPHS AND FLOW COMPUTERS

- Gas chromatographs
- CVDDs
- Electronic volume conversion devices and flow computers
- Pressure and temperature transducers
- Compressibility calculations
- Orifice calculations
- Gas properties calculations

